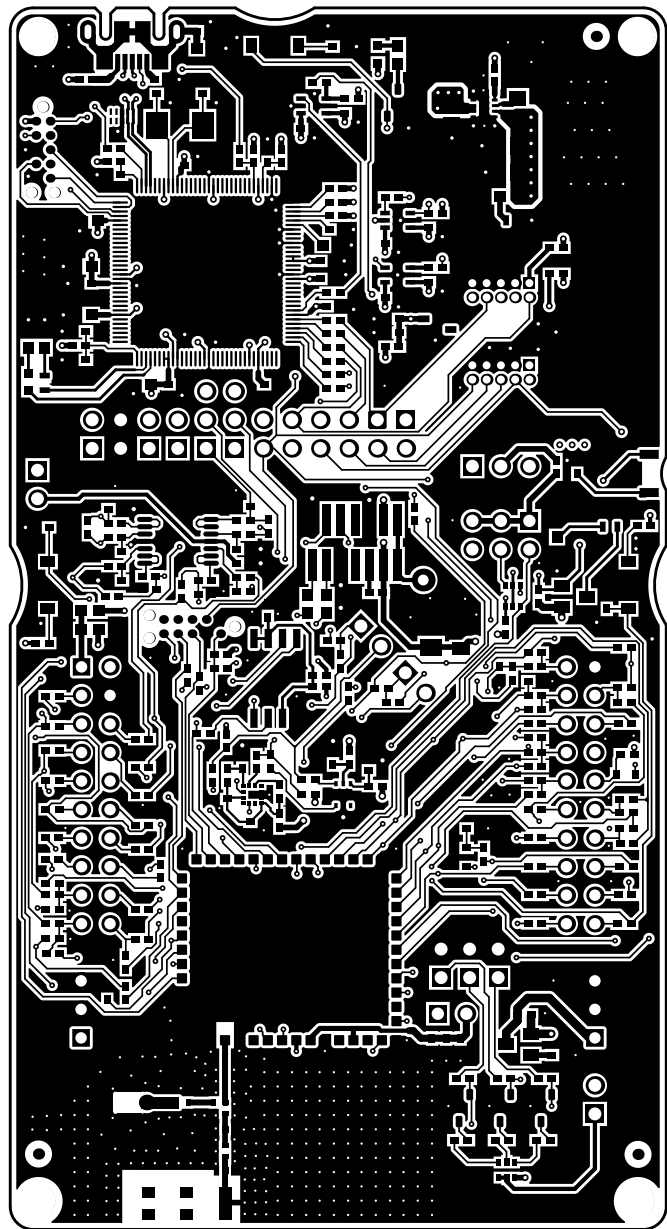
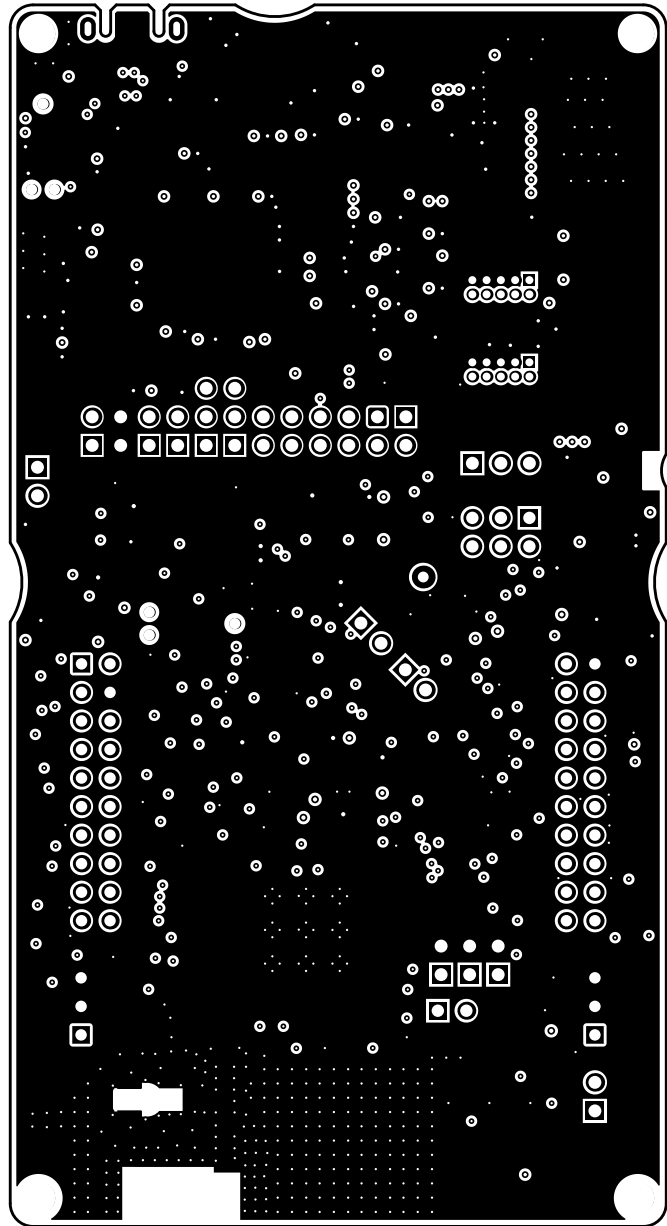


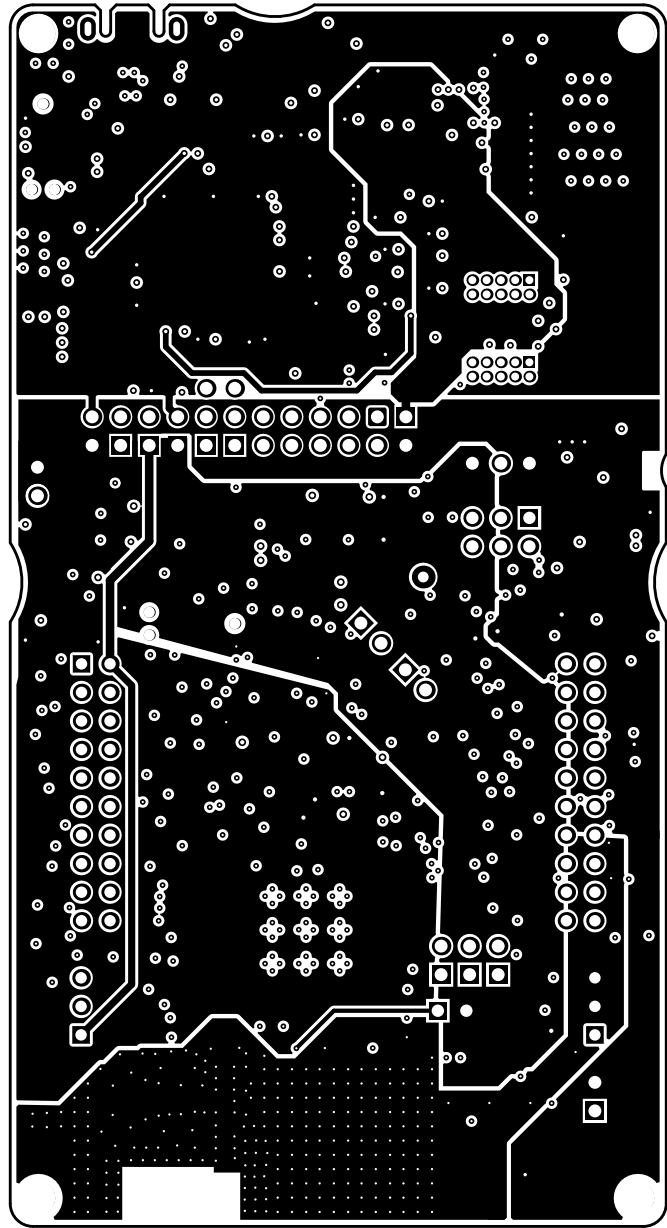
ALL ARTWORK VIEWED FROM TOP SIDE	BOARD #:MCU070	REV: A	SUN REV: Not In VersionControl
LAYER NAME = Top Solder			
	GENERATED : 5/6/2019 1:34:02 PM	TEXAS INSTRUMENTS	



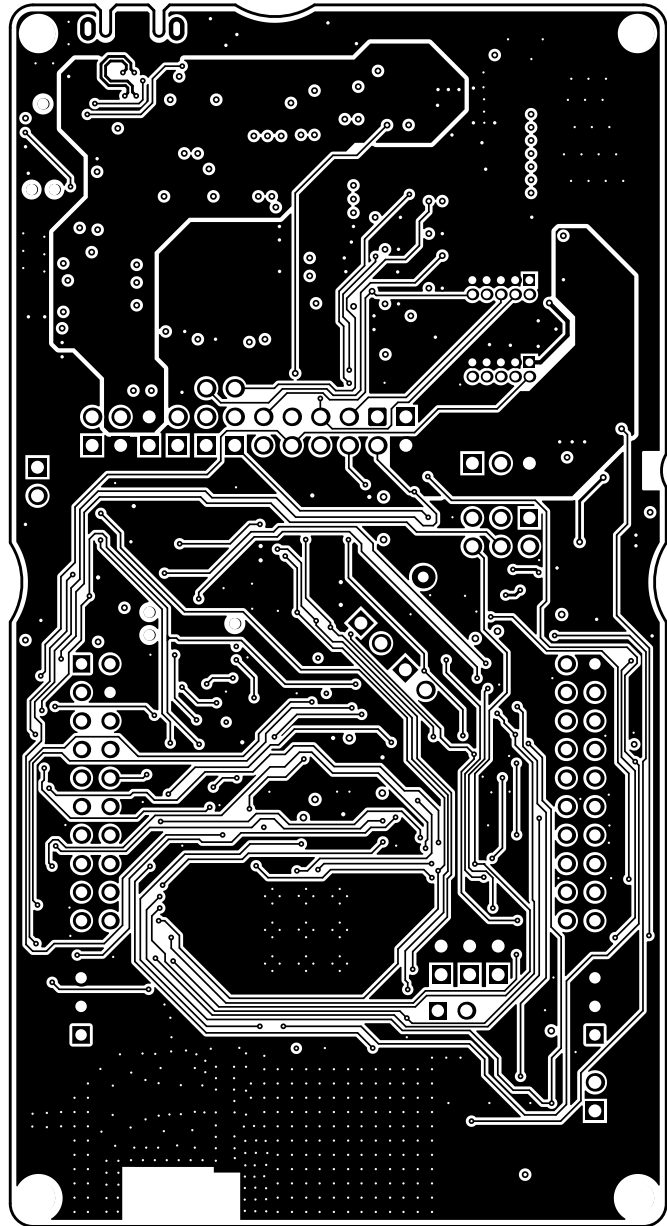
ALL ARTWORK VIEWED FROM TOP SIDE	BOARD #: MCU070	REV: A	SUN REV: Not In VersionControl
LAYER NAME = TOP			
	GENERATED : 5/6/2019	1:34:03 PM	TEXAS INSTRUMENTS



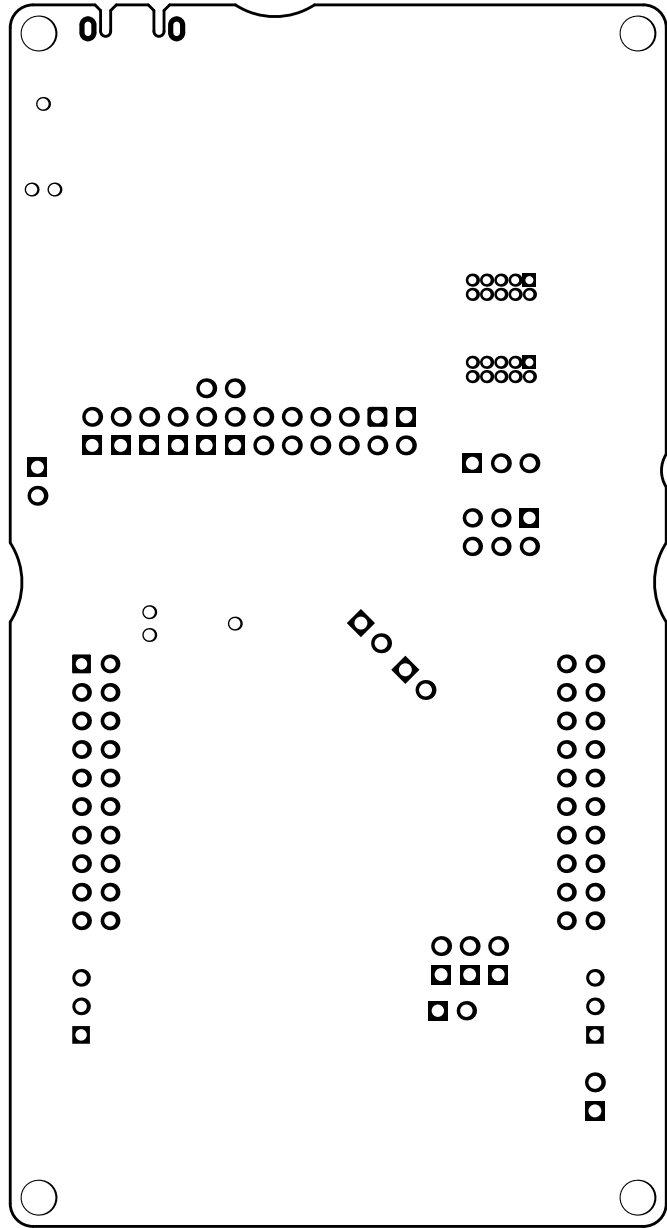
ALL ARTWORK VIEWED FROM TOP SIDE	BOARD #:	MCU070	REV:	A	SUN REV:	Not In VersionControl
LAYER NAME =	GND					
	GENERATED	:	5/6/2019	1:34:05 PM	TEXAS INSTRUMENTS	



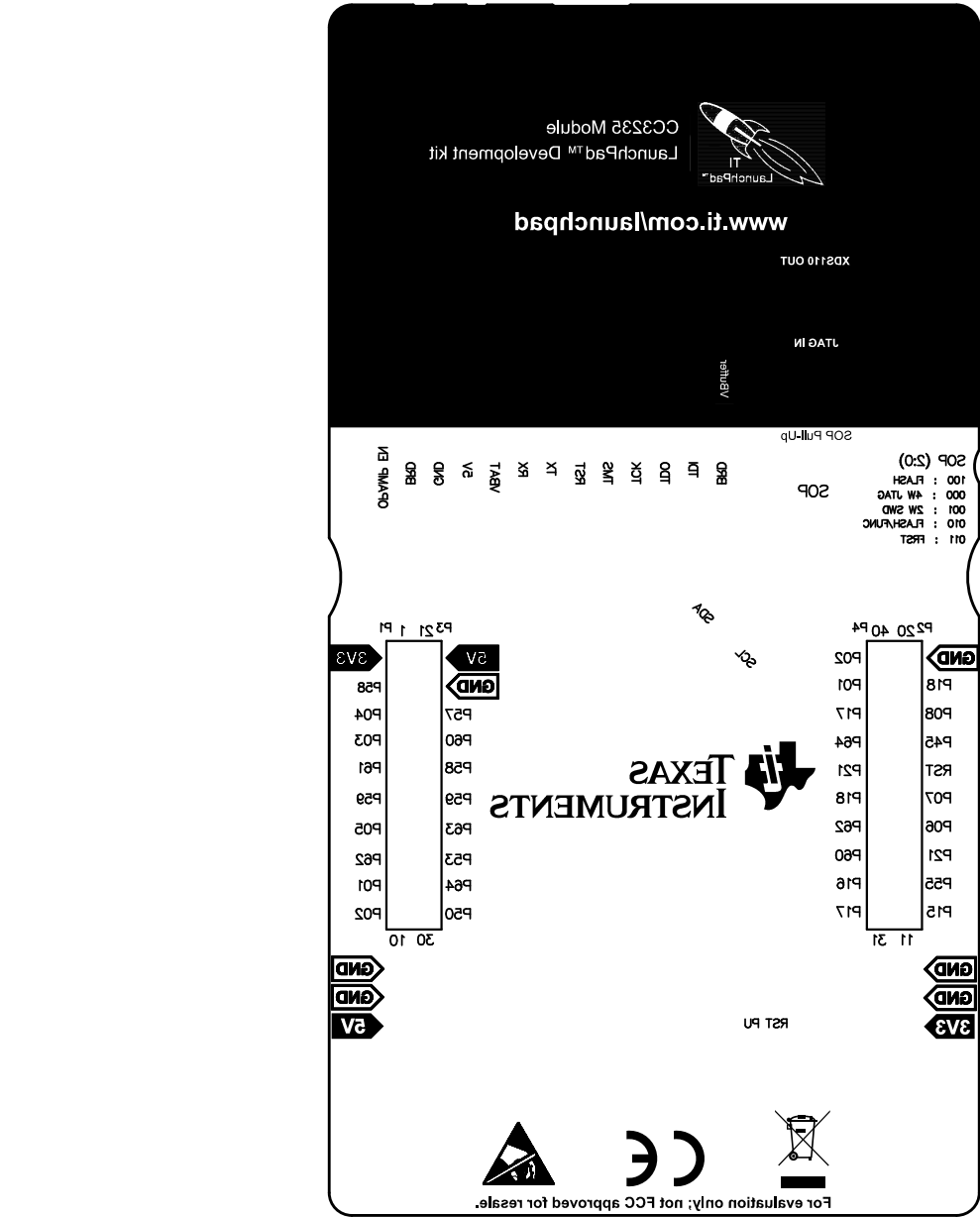
ALL ARTWORK VIEWED FROM TOP SIDE	BOARD #:	MCU070	REV:	A	SUN REV:	Not In VersionControl
LAYER NAME =	PWR					
	GENERATED	:	5/6/2019	1:34:06 PM	TEXAS INSTRUMENTS	



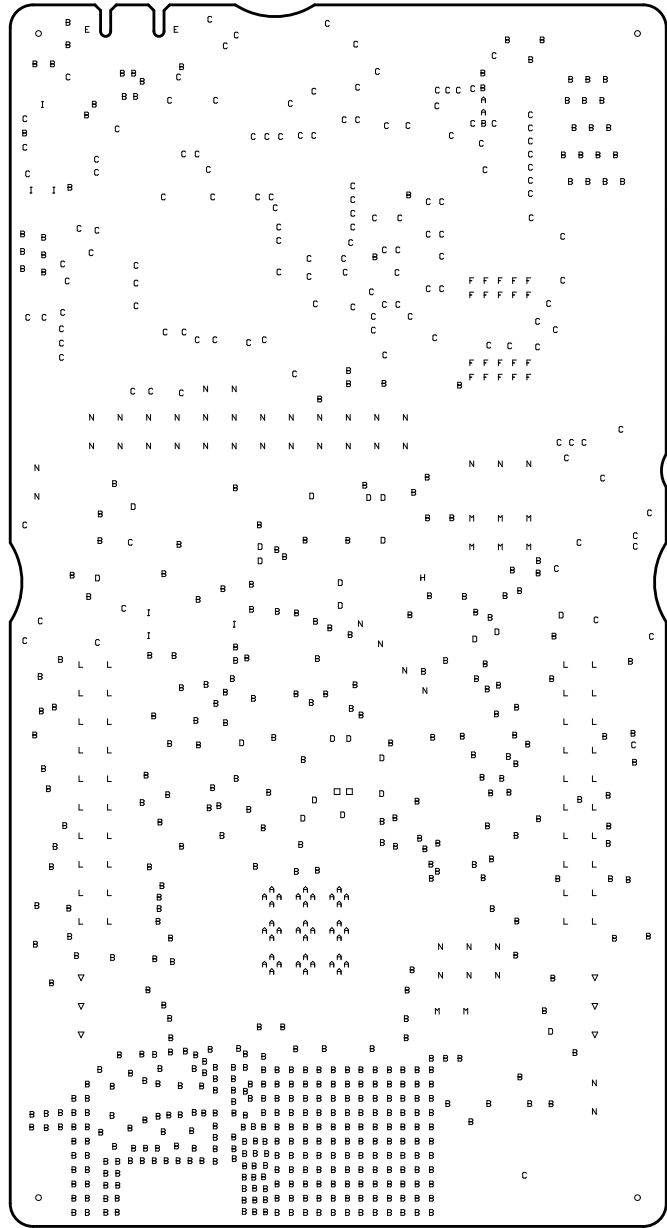
ALL ARTWORK VIEWED FROM TOP SIDE	BOARD #:	MCU070	REV:	A	SUN REV:	Not In VersionControl
LAYER NAME =	BOTTOM					
	GENERATED	:	5/6/2019	1:34:08 PM	TEXAS INSTRUMENTS	



ALL ARTWORK VIEWED FROM TOP SIDE	BOARD #:	MCU070	REV:	A	SUN REV:	Not In VersionControl
LAYER NAME =	Bottom Solder					
	GENERATED	:	5/6/2019	1:34:09 PM	TEXAS INSTRUMENTS	



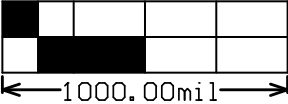
ALL ARTWORK VIEWED FROM TOP SIDE	BOARD #:	MCU070	REV:	A	SUN REV:	Not In VersionControl
LAYER NAME =	SILKSCREEN BOTTOM					
	GENERATED	:	5/6/2019	1:34:11 PM	TEXAS INSTRUMENTS	



DRILL CHART :

Symbol	Count	Hole Size	Plated	Hole Type	Hole Length	Routed Path Length	Hole Tolerance	Tenting
□	2	7.87mil (0.200mm)	PTH	Round	-	-		
A	38	7.87mil (0.200mm)	PTH	Round	-	-	+0.00mil/-7.87mil	BOTTOM SIDE
B	495	8.00mil (0.203mm)	PTH	Round	-	-	+0.00mil/-4.00mil	BOTH SIDES
C	142	12.00mil (0.305mm)	PTH	Round	-	-	+0.00mil/-4.00mil	BOTH SIDES
D	22	15.00mil (0.381mm)	PTH	Round	-	-	+0.00mil/-4.00mil	BOTH SIDES
E	2	23.62mil (0.600mm)	PTH	Slot	51.18mil (1.300mm)	27.56mil (0.700mm)	+/-3.00mil	
F	20	27.95mil (0.710mm)	PTH	Round	-	-	+/-3.00mil	
H	1	37.99mil (0.965mm)	PTH	Round	-	-	+/-3.00mil	
I	6	39.00mil (0.991mm)	NPTH	Round	-	-	+/-2.00mil	
▽	6	40.16mil (1.020mm)	PTH	Round	-	-		
L	40	40.16mil (1.020mm)	PTH	Round	-	-	+/-3.00mil	
M	8	43.31mil (1.100mm)	PTH	Round	-	-	+/-3.00mil	
N	43	45.28mil (1.150mm)	PTH	Round	-	-	+/-3.00mil	
O	4	118.11mil (3.000mm)	NPTH	Round	-	-	+/-0.00mil	
	829 Total							

Slot definitions : Routed Path Length = Calculated from tool start centre position to tool end centre position.
Hole Length = Routed Path Length + Tool Size = Slot length as defined in the PCB layout



ALL ARTWORK VIEWED FROM TOP SIDE	BOARD #:	MCU070	REV:	A	SUN REV:	Not In VersionControl
LAYER NAME =	FAB					
	GENERATED	:	5/6/2019	1:34:12 PM	TEXAS INSTRUMENTS	

